

**NFKBIE Antibody (Center)**  
**Purified Rabbit Polyclonal Antibody (Pab)**  
**Catalog # AP21219c****Specification**

---

**NFKBIE Antibody (Center) - Product Information**

Application	WB,E
Primary Accession	<a href="#">O00221</a>
Reactivity	Human
Host	Rabbit
Clonality	polyclonal
Isotype	Rabbit IgG
Calculated MW	52864

**NFKBIE Antibody (Center) - Additional Information****Gene ID** 4794**Other Names**

NF-kappa-B inhibitor epsilon, NF-kappa-BIE, I-kappa-B-epsilon, Ikb-E, Ikb-epsilon, IkappaBepsilon, NFKBIE, IKBE

**Target/Specificity**

This NFKBIE antibody is generated from a rabbit immunized with a KLH conjugated synthetic peptide between 191-224 amino acids from the Central region of human NFKBIE.

**Dilution**

WB~~1:2000

E~~Use at an assay dependent concentration.

**Format**

Purified polyclonal antibody supplied in PBS with 0.09% (W/V) sodium azide. This antibody is purified through a protein A column, followed by peptide affinity purification.

**Storage**

Maintain refrigerated at 2-8°C for up to 2 weeks. For long term storage store at -20°C in small aliquots to prevent freeze-thaw cycles.

**Precautions**

NFKBIE Antibody (Center) is for research use only and not for use in diagnostic or therapeutic procedures.

**NFKBIE Antibody (Center) - Protein Information****Name** NFKBIE**Synonyms** IKBE

**Function** Sequesters NF-kappa-B transcription factor complexes in the cytoplasm, thereby inhibiting their activity (PubMed:[9315679](#)). Sequestered complexes include NFKB1-RELA (p50-p65) and NFKB1-REL (p50- c-Rel) complexes (PubMed:[9135156](#), PubMed:[9315679](#)). Limits B-cell activation in response to pathogens, and also plays an important role in B-cell development (By similarity).

#### **Cellular Location**

Cytoplasm.

#### **Tissue Location**

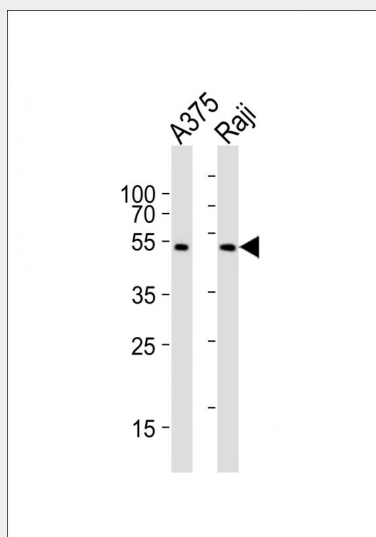
Highly expressed in spleen, testis and lung, followed by kidney, pancreas, heart, placenta and brain. Also expressed in granulocytes and macrophages

### **NFKBIE Antibody (Center) - Protocols**

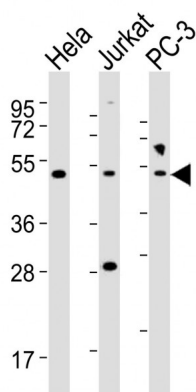
Provided below are standard protocols that you may find useful for product applications.

- [Western Blot](#)
- [Blocking Peptides](#)
- [Dot Blot](#)
- [Immunohistochemistry](#)
- [Immunofluorescence](#)
- [Immunoprecipitation](#)
- [Flow Cytometry](#)
- [Cell Culture](#)

### **NFKBIE Antibody (Center) - Images**



All lanes : Anti-NFKBIE Antibody (Center) at 1:1000 dilution Lane 1: A375 whole cell lysates Lane 2: Raji whole cell lysates Lysates/proteins at 20 µg per lane. Secondary Goat Anti-Rabbit IgG, (H+L), Peroxidase conjugated at 1/10000 dilution Predicted band size : 53 kDa Blocking/Dilution buffer: 5% NFDM/TBST.



All lanes : Anti-NFKBIE Antibody (Center) at 1:2000 dilution Lane 1: HeLa whole cell lysates Lane 2: Jurkat whole cell lysates Lane 3: PC-3 whole cell lysates Lysates/proteins at 20 µg per lane. Secondary Goat Anti-Rabbit IgG, (H+L), Peroxidase conjugated at 1/10000 dilution Predicted band size : 53 kDa Blocking/Dilution buffer: 5% NFDM/TBST.

#### **NFKBIE Antibody (Center) - Background**

Inhibits NF-kappa-B by complexing with and trapping it in the cytoplasm. Inhibits DNA-binding of NF-kappa-B p50-p65 and p50-c-Rel complexes.

#### **NFKBIE Antibody (Center) - References**

Whiteside S.T.,et al.EMBO J. 16:1413-1426(1997).  
Mungall A.J.,et al.Nature 425:805-811(2003).  
Mural R.J.,et al.Submitted (JUL-2005) to the EMBL/GenBank/DDBJ databases.  
Li Z.,et al.Mol. Cell. Biol. 17:6184-6190(1997).